



## Fire Exit Policy

**GOVERNING BODY APPROVAL: Autumn Term 2018-19**

**COMMITTEE WITH RESPONSIBILITY FOR MONITORING  
& REVIEW:**

Curriculum Committee

**NEXT REVIEW DATE: Autumn Term 2019/20**

# Fire Exit Plan – Newman Catholic College

## Procedures:

- Pupils leave bags and coats in rooms.
- Teacher leads classes to drill positions in orderly manner
- Staff to register own form group and deliver to HoS/SLT
- SLT inform HoS to dismiss class –by class

## EVACUATION EXITS:

- Priority: Front gate to Harlesden Road
- Alternative: Back exit to Holland Road

## Locations:

Fire drill positions as marked:

**ENTRANCE ONTO**

**BASKETBALL COURT:**

**Year 7, 8, 9:**

Basketball Court

**ENTRANCE THROUGH**

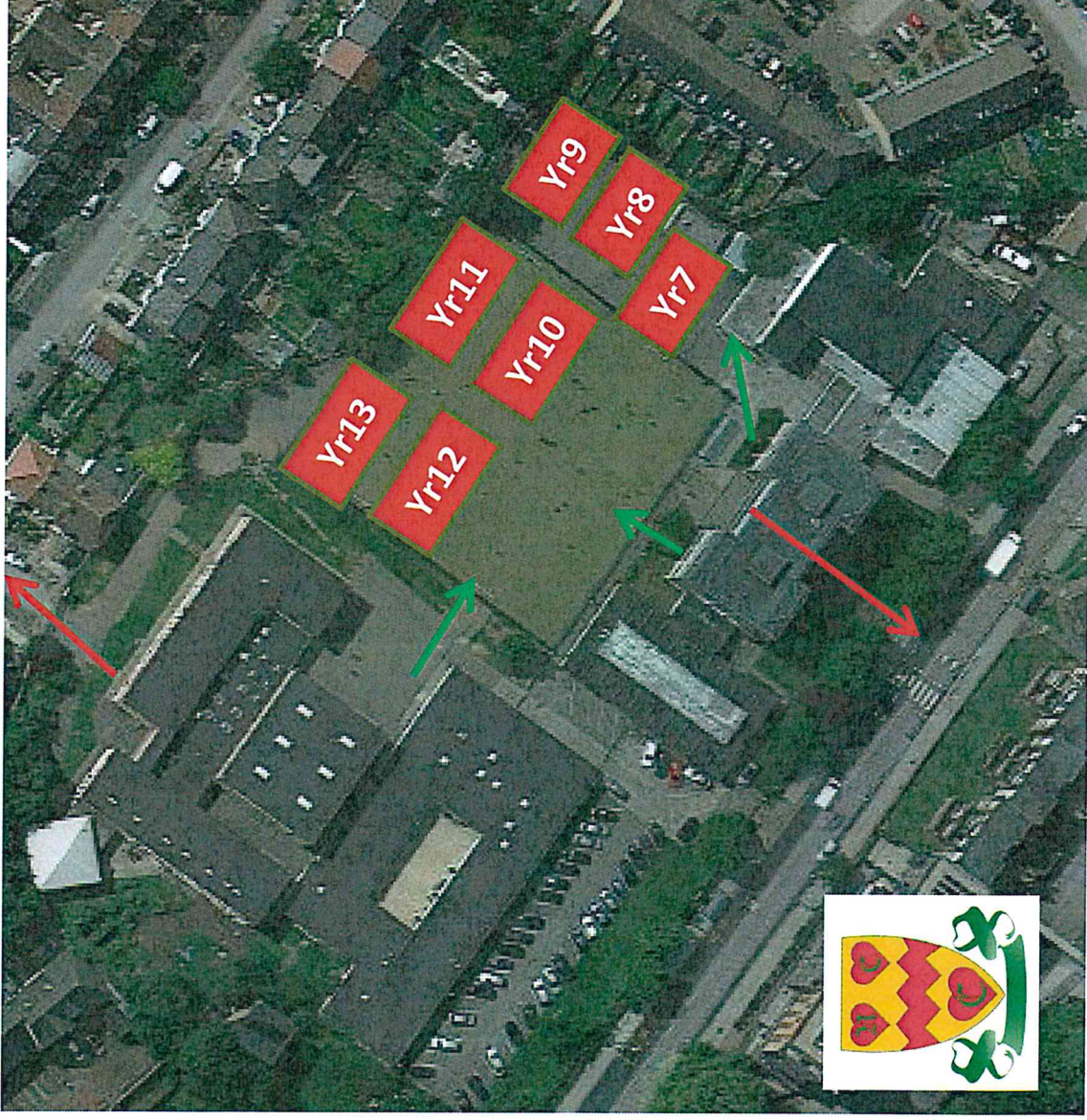
**ASTRO GATES:**

**Year 10, 11:**

Astro Top Right

**Year 12, 13:**

Astro Top Left





ASTRO: Signs on Astro fence

Year 13

Year 12

Year 11

Year 10

BASKETBALL: Sprayed on floor

**9B**

**9F**

**9J**

**9P**

**8B**

**8F**

**8J**

**8P**

**7B**

**7F**

**7J**

**7P**