

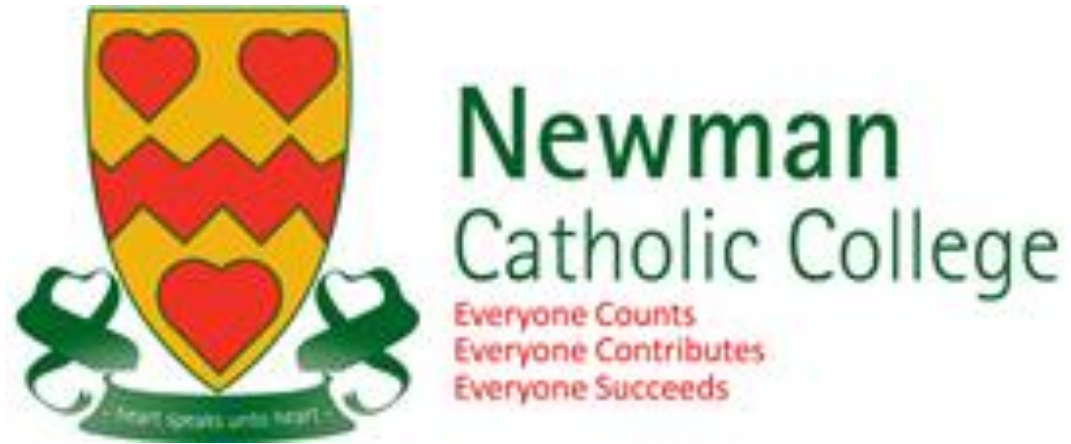


Newman
Catholic College

Everyone Counts
Everyone Contributes
Everyone Succeeds

Catholic Academy Trust Consultation

7th March 2023



Welcome and Introductions



Diocese of Westminster



CAT Strategy in Context

- 80% of secondary schools, 40% of primary schools and 44% of special schools in England are academies (as of October 2023).
- All Catholic Diocese in England have a plans in place to form Catholic Academy Trusts for all their schools to protect Catholic Education.
- The DfE has stated that all school in England should have plans to join a MAT (Multi-Academy Trust) by 2030.
- There are currently 50 Academies in 8 CATs across the Diocese of Westminster, with growing engagement in all Family areas
- All schools in the Diocese will have plans to join a CAT by 2025.

Foreword from the Cardinal...

“Now we are living through times of considerable hardship for many We have to see, be clear, and readjust. This means taking difficult decisions, marked by realism, about resources. In such circumstances it is right to look for economies that can be achieved by structures of cooperation, between schools within the same locality and within the wider family of schools. This is not an enforced 'master-plan', as you well know. It is a measured and appropriate response to the reality we face. **The alternative, individual schools in isolation, will lead not only to conflict but also to the decline that eventually accompanies isolationist policies.** “

***Extract from Cardinal Nichols' address to the Diocese of Westminster
Headteachers Conference February 2018***

The Diocesan Vision for the CAT programme



Diocese of Westminster

- To be inclusive and open to all Catholic schools in Brent.
- To provide pupils with the best life chances and educational outcomes in Catholic communities imbued with gospel values and with Christ at the centre.
- Develop the professional expertise by recruiting and retaining the best staff
- Develop existing links and partnerships with other Schools.
- Benefiting from shared economies of scale and efficiency savings
- School leaders, teachers and Governors can combine skills, share thinking and tackle challenges together;
- Protect, secure and develop Catholic education

Our Proposal....

Is that

- Newman Catholic College
- St Mary's Catholic Primary School

Convert to academies and expand the existing All Saint Academy Trust.

The All Saints' Trust was opened in 2016 and currently consists of St Gregory's Catholic Science College, St Bernadette's Catholic Nursery & Primary School, Our Lady of Grace Catholic Infant School, Our Lady of Grace Catholic Junior School and St Margaret Clitherow Catholic Primary School.

In time all Catholic schools in Brent, Camden and Islington will join ASAT.

How do we benefit?

- Economies of scale and increased resilience
- Greater collaboration
- Coordination and support from an Executive Leader
- Shared back-office functions
- Great access to capital funding
- Able to reclaim VAT
- Recruitment and retaining the best Catholic Leaders and staff
- Protect, secure and develop Catholic Education through a network of Family CATs supporting schools



What will not change....



Ethos of our School



The Staff Team



Our School Uniform
and Curriculum



Governors will
continue to serve on a
Local Governing Body



PAN London Co-
ordinated admissions
process



Current admission
policy will continue to
apply



The timings of the
current school day



The terms and
conditions of
employment

What will change....



The legal status and governance arrangements



The current Governing Body will become a Local Governing Body



The Trust Board will have strategic oversight

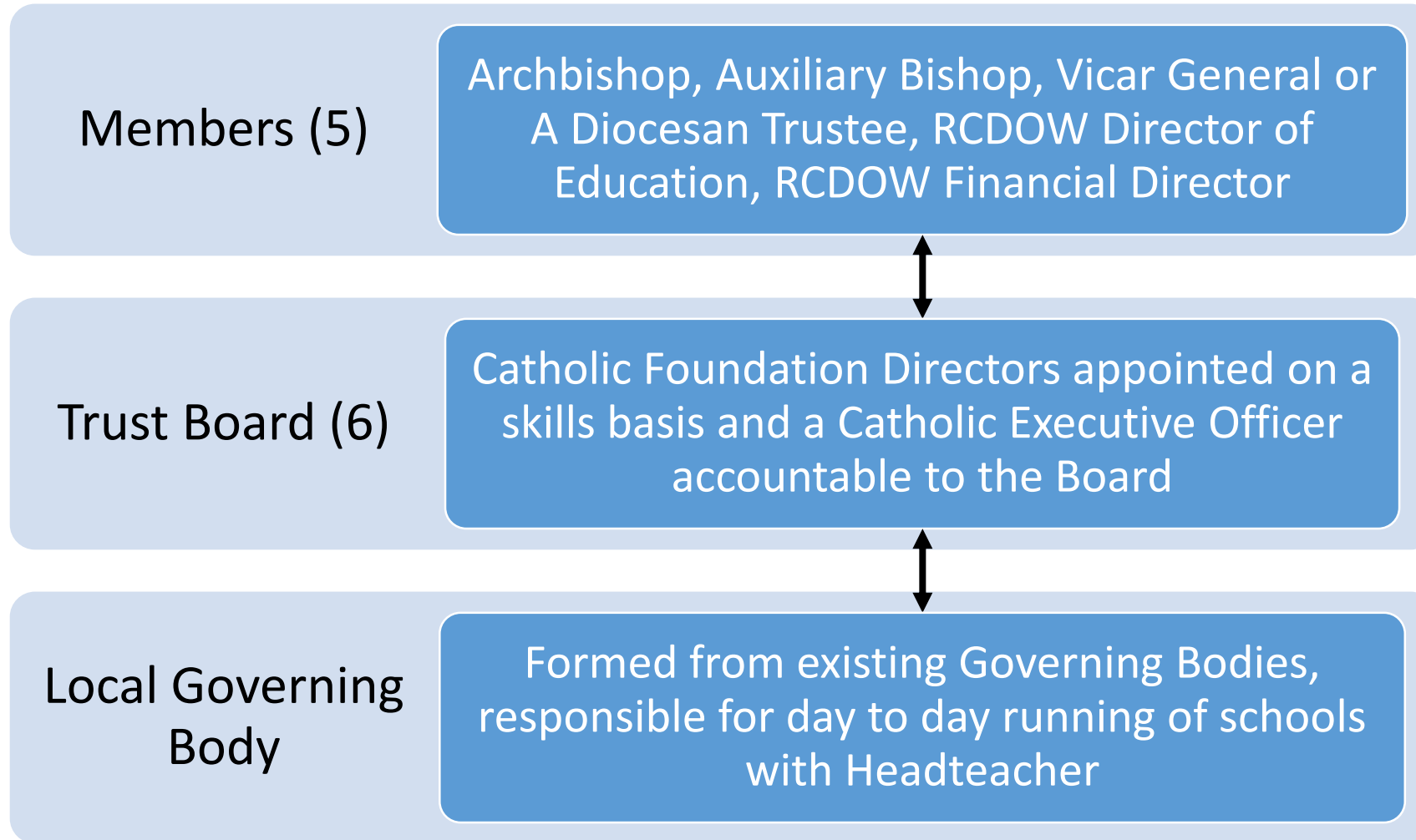


CEO to lead the strategic development of the Trust



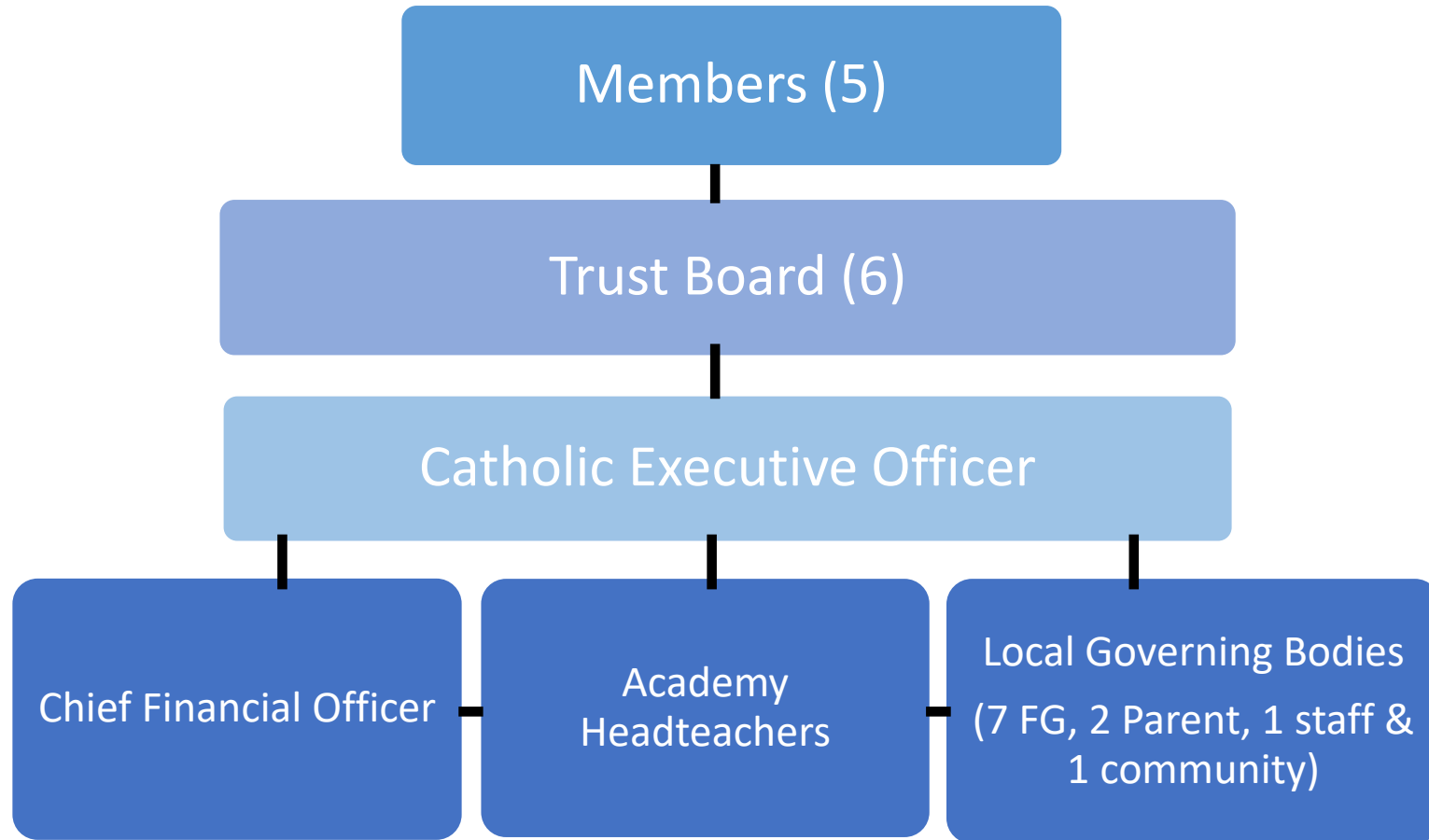
Funding direct from ESFA not through the LA

Governance Structure





Organisational Structure



Why now?



Preserve the future
of Catholic Education



Opportunity to shape
the local agenda



Growing pressures on
School budgets



Falling roll in parts of
the Diocese

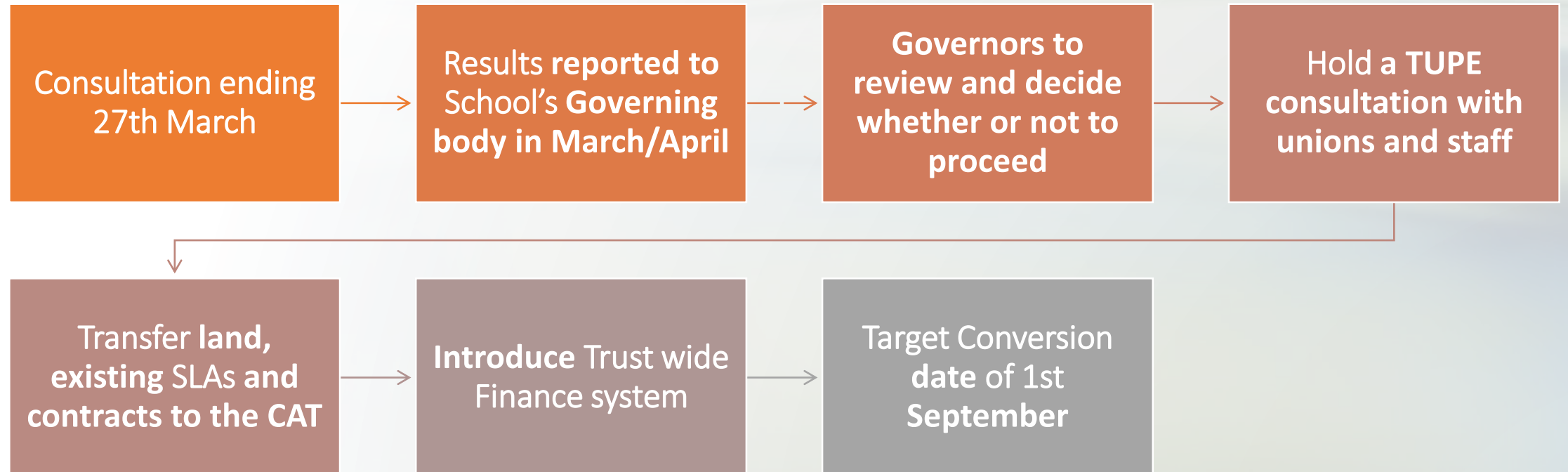


Reduction in capacity
of Local Authorities
to support schools



Central to national
education policy

What are the next Steps?



Any Questions....



Thank you for your time and
contributions

A thick, hand-drawn orange line is positioned horizontally below the text, spanning approximately the width of the word 'contributions'.