

Newman Catholic College

Relationships and Sex

Education Policy



GOVERNING BODY APPROVAL: Autumn Term 2021

COMMITTEE WITH RESPONSIBILITY FOR MONITORING & REVIEW:

[Curriculum Committee](#)

NEXT REVIEW DATE: Summer 2024

SCHOOL MISSION STATEMENT

‘Everyone Counts, Everyone Contributes, Everyone Succeeds’

Introduction

Relationships and Sex Education has three strands

- **Created and loved by God** (this explores the individual)
The Christian imperative to love self, made in the image and likeness of God, shows an understanding of the importance of valuing and understanding oneself as the basis for personal relationships.
- **Created to love others** (this explores an individual’s relationships with others)
God is love. We are created out of love and for love. The command to love is the basis of all Christian morality.
- **Created to live in community – local, national & global** (this explores the individual’s relationships with the wider world)
Human beings are relational by nature and live in the wider community. Through our exchange with others, our mutual service and through dialogue, we attempt to proclaim and extend the Kingdom of God for the good of individuals and the good of society.

Consultation

- pupil focus groups / school council
- questionnaires to parents / carers
- review of rse curriculum content with staff and pupils
- consultation with wider school community
- consultation with school governors

Implementation and Review of Policy

Implementation of the policy will take place after consultation with the Governors in the Summer term 2020. This policy will be reviewed every year/2 years by the Head teacher, RSE Co-ordinator, the Governing Body and Staff.

Dissemination

The draft policy will be given to all members of the Governing Body, and all teaching and non-teaching members of staff. Copies of the document will be available to all parents through the school’s website and a copy is available in the school office. Details of the content of the RSE curriculum will also be published on the school’s web site.

DEFINING RELATIONSHIP AND SEX EDUCATION

The DFE guidance defines RSE as “lifelong learning about physical, moral and emotional development. It is about the understanding of the importance of marriage and family life, stable and loving relationships, respect, love and care. It is also about the teaching of sex, sexuality and sexual health”¹. It is about the development of the pupil’s knowledge and understanding of

themselves as a sexual being, about what it means to be fully human, called to live in right relationships with self and others and being enabled to make moral decisions in conscience. The DFE identifies three main elements: “attitudes and values, personal and social skills, and knowledge and understanding”². (The Welsh Assembly Government envisages that effective school RSE programmes help learners to develop the skills and knowledge appropriate to their age, understanding and development to enable them to make responsible decisions about their relationships, sexual health and well-being.)

STATUTORY CURRICULUM REQUIREMENTS

We are legally required to teach those aspects of RSE which are statutory parts of National Curriculum Science. (There is also a separate requirement for maintained secondary schools to teach about HIV, AIDS and sexually transmitted infections).

RATIONALE

‘I HAVE COME THAT YOU MIGHT HAVE LIFE AND HAVE IT TO THE FULL’

(Jn.10.10)

We are involved in relationships and sex education precisely because of our Christian beliefs about God and about the human person. The belief in the unique dignity of the human person made in the image and likeness of God underpins the approach to all education in a Catholic school. Our approach to RSE therefore is rooted in the Catholic Church’s teaching of the human person and presented in a positive framework of Christian ideals.

At the heart of the Christian life is the Trinity, Father, Son and Spirit in communion, united in loving relationship and embracing all people and all creation. As a consequence of the Christian belief that we are made in the image and likeness of God, gender and sexuality are seen as God’s gift, reflect God’s beauty, and share in the divine creativity. RSE, therefore, will be placed firmly within the context of relationship as it is there that sexuality grows and develops.

Following the guidance of the Bishops of England and Wales and as advocated by the DFE (and the Welsh Assembly Government) RSE will be firmly embedded in the PSHE framework as it is concerned with nurturing human wholeness and integral to the physical, spiritual, emotional, moral, social and intellectual development of pupils. It is centred on Christ’s vision of being human as good news and will be positive and prudent, showing the potential for development, while enabling the dangers and risks involved to be understood and appreciated.

All RSE will be in accordance with the Church’s moral teaching. It will emphasise the central importance of marriage and the family whilst acknowledging that all pupils have a fundamental right to have their life respected whatever household they come from and support will be provided to help pupils deal with different sets of values.

VALUES AND VIRTUES

Our programme enshrines Catholic values relating to the importance of stable relationships, marriage and family life. It also promotes those virtues which are essential in responding to the God's call to love others with a proper respect for their dignity and the dignity of the human body. The following virtues will be explicitly explored and promoted: faithfulness, fruitfulness, chastity, integrity, prudence, mercy and compassion.

AIM OF RSE AND THE MISSION STATEMENT

Our Mission Statement '**Everyone Counts, Everyone Contributes, Everyone Succeeds**' commits us to the education of the whole child (spiritual, physical, intellectual, moral, social, cultural, emotional) and we believe that RSE is an integral part of this education. Furthermore, our school aims state that we will endeavour to raise pupils' self-esteem, help them to grow in knowledge and understanding, recognise the value of all persons and develop caring and sensitive attitudes. It is in this context that we commit ourselves:

In partnership with parents, to provide children and young people with a "positive and prudent sexual education"³ which is compatible with their physical, cognitive, psychological, and spiritual maturity, and rooted in a Catholic vision of education and the human person.

Objectives

To develop the following attitudes and virtues:

- reverence for the gift of human sexuality and fertility;
- respect for the dignity of every human being – in their own person and in the person of others;
- joy in the goodness of the created world and their own bodily natures;
- responsibility for their own actions and a recognition of the impact of these on others;
- recognising and valuing their own sexual identity and that of others;
- celebrating the gift of life-long, self-giving love;
- recognising the importance of marriage and family life;
- fidelity in relationships.

To develop the following **personal and social skills**:

- making sound judgements and good choices which have integrity and which are respectful of the individual's commitments;
 - loving and being loved, and the ability to form friendships and loving, stable relationships free from exploitation, abuse and bullying;
 - managing emotions within relationships, and when relationships break down, with confidence, sensitivity and dignity;
-

- managing conflict positively, recognising the value of difference;
- cultivating humility, mercy and compassion, learning to forgive and be forgiven;
- developing self-esteem and confidence, demonstrating self-respect and empathy for others;
- building resilience and the ability to resist unwanted pressures, recognising the influence and impact of the media, internet and peer groups and so developing the ability to assess pressures and respond appropriately;
- being patient, delaying gratification and learning to recognise the appropriate stages in the development of relationships, and how to love chastely;
- assessing risks and managing behaviours in order to minimise the risk to health and personal integrity.

To know and understand:

- the Church's teaching on relationships and the nature and meaning of sexual love;
- the Church's teaching on marriage and the importance of marriage and family life;
- the centrality and importance of virtue in guiding human living and loving;
- the physical and psychological changes that accompany puberty;
- the facts about human reproduction, how love is expressed sexually and how sexual love plays an essential and sacred role in procreation;
- how to manage fertility in a way which is compatible with their stage of life, their own values and commitments, including an understanding of the difference between natural family planning and artificial contraception;
- how to keep themselves safe from sexually transmitted infections and how to avoid unintended pregnancy, including where to go for advice.

Outcomes

INCLUSION AND DIFFERENTIATED LEARNING

We will ensure RSE is sensitive to the different needs of individual pupils in respect to pupils' different abilities, levels of maturity and personal circumstances; for example their own sexual orientation, faith or culture and is taught in a way that does not subject pupils to discrimination. Lessons will also help children to realise the nature and consequences of discrimination, teasing, bullying and aggressive behaviours (including cyber-bullying), use of prejudice-based language and how to respond and ask for help. (See NCC Equality and inclusion policies).

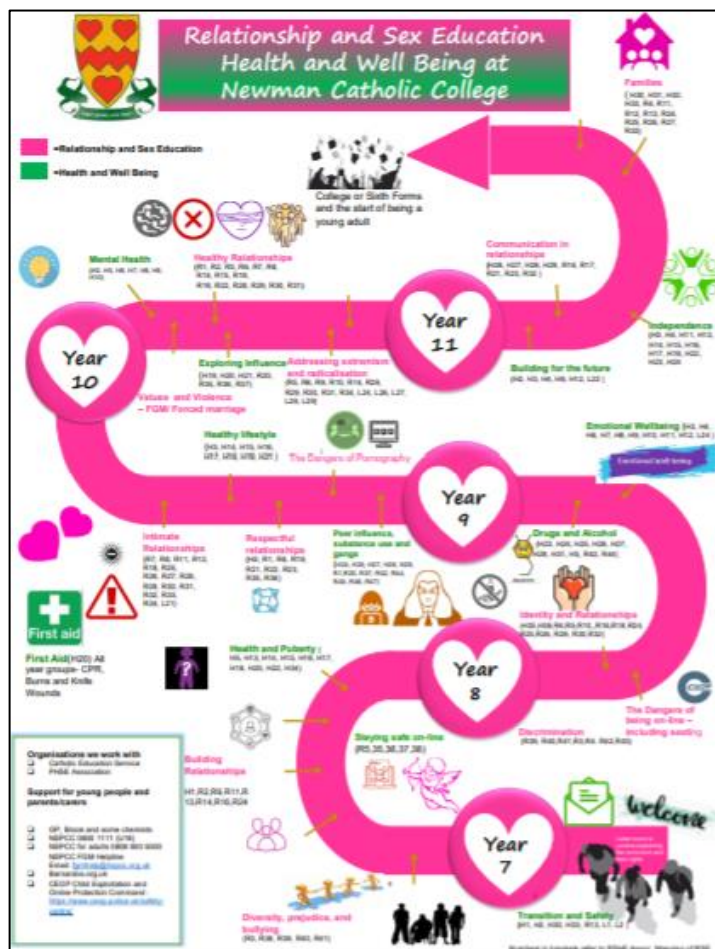
EQUALITIES OBLIGATIONS

The governing body have wider responsibilities under the Equalities Act 2010 and will ensure that our school strives to do the best for all of the pupils, irrespective of disability, educational needs, race, nationality, ethnic or national origin, pregnancy, maternity, sex, gender identity, religion or sexual orientation or whether they are looked after children.

BROAD CONTENT OF RSE

Three aspects of RSE - attitudes and values, knowledge and understanding, and personal and social skills will be provided in three inter-related ways: the whole school / ethos dimension; a cross-curricular dimension and a specific relationships and sex curriculum.

Our programme will cover



Year 7	Diversity Diversity, prejudice, and bullying Building relationships Self-worth, romance and friendships (including online) and relationship boundaries
Year 8	Discrimination Discrimination in all its forms, including: racism, religious discrimination, disability, discrimination, sexism, homophobia, biphobia and transphobia Identity and relationships Gender identity, sexual orientation, consent, 'sexting', and an introduction to contraception
Year 9	Respectful relationships Families and parenting, healthy relationships, conflict resolution, and relationship changes Intimate relationships Relationships and sex education including consent, contraception, the risks of STIs, and attitudes to pornography
Year 10	Healthy relationships Relationships and sex expectations, myths, pleasure and challenges, including the impact of the media and pornography Addressing extremism and radicalisation Communities, belonging and challenging extremism
Year 11	Communication in relationships Personal values, assertive communication (including in relation to contraception and sexual health), relationship challenges and abuse Families Different families and parental responsibilities, pregnancy, marriage and forced marriage and changing relationships
Sixth Form	Sex and Relationships explores safe, equal, caring and enjoyable relationships and discusses real life issues appropriate to the age and stage of the pupils, including friendships, families, consent, relationship abuse, sexual exploitation and safe relationships online
EAL Project Groups	Discrimination Discrimination in all its forms, including: racism, religious discrimination, disability, discrimination, sexism, homophobia, biphobia and transphobia Building relationships Self-worth, romance and friendships (including online) and relationship boundaries

PROGRAMME / RESOURCES

Appendices to this policy provide further information about the programme and resources for suggested use.

Teaching strategies will include:

- establishing ground rules
- distancing techniques
- discussion
- project learning
- reflection
- experiential
- *active*
- brainstorming
- film & video
- group work
- role-play
- trigger drawings
- values clarification

PARENTS AND CARERS

We recognise that parents (and other carers who stand in their place) are the primary educators of their children. As a Catholic school, we provide the principal means by which the Church assists parents and carers in educating their children. Therefore the school will support parents and carers by providing material to be shared with their children at home and workshops to help parents/carers to find out more. Parents/carers will be informed by letter when the more sensitive aspects of RSE will be covered in order that they can be prepared to talk and answer questions about their children's learning.

Parents must be consulted before this policy is ratified by the governors. They will be consulted at every stage of the development of the RSE programme, as well as during the process of monitoring, review and evaluation. They will be able to view the resources used by the school in the RSE programme. Our aim is that, at the end of the consultation process, every parent and carer will have full confidence in the school's RSE programme to meet their child's needs.

Parents have ***the right to withdraw*** their children from RSE except in those elements which are required by the National Curriculum science orders. Should parents wish to withdraw their children they are asked to notify the school by contacting the headteacher. The school will provide support by providing material for parents to help the children with their learning.

We believe that the controlled environment of the classroom is the safest place for this curriculum to be followed.

BALANCED CURRICULUM

Whilst promoting Catholic values and virtues and teaching in accordance with Church teaching, we will ensure that pupils are offered a balanced programme by providing an RSE programme that offers a range of viewpoints on issues. Pupils will also receive clear scientific information as well as covering the aspects of the law pertaining to RSE (in secondary schools/academies relating to forced-marriage, female genital mutilation, abortion, the age of consent and legislation relating to equality). Knowing about facts and enabling young people to explore differing viewpoints is not the same as promoting behaviour and is not incompatible with our school's promotion of Catholic teaching. We will ensure that pupils have access to the learning they need to stay safe, healthy and understand their rights as individuals.

RESPONSIBILITY FOR TEACHING THE PROGRAMME

Responsibility for the specific relationships and sex education programme lays with.....(the relevant curriculum staff; this will normally include science, religious education, physical education, RSE and PSHE).

However, all staff will be involved in developing the attitudes and values aspect of the RSE programme. They will be role models for pupils of good, healthy, wholesome relationships as between staff, other adults and pupils. They will also be contributing to the development of pupils' personal and social skills.

External Visitors

Our school will often call upon help and guidance from outside agencies and health specialists to deliver aspects of RSE. Such visits will always complement the current programme and never substitute or replace teacher led sessions.

It is important that any external visitor is clear about their role and responsibility whilst they are in school delivering a session. Any visitor must adhere to our code of practice developed in line with CES guidance 'Protocol for Visitors to Catholic Schools'⁴.

Health professionals should follow the school's policies, minimising the potential for disclosures or inappropriate comments using negotiated ground rules and distancing techniques as other teachers would. They will ensure that all teaching is rooted in Catholic principles and practice.

OTHER ROLES AND RESPONSIBILITIES REGARDING RSE

Governors

- Review the RSE policy, in consultation with parents and teachers;
 - Ensure that the policy is available to parents;
 - Ensure that the policy is in accordance with other whole school policies, e.g., SEN, the ethos of the school and our Christian beliefs;
-

- Ensure that parents know of their right to withdraw their children;
- Establish a link governor to share in the monitoring and evaluation of the programme, including resources used;
- Ensure that the policy provides proper and adequate coverage of relevant National Curriculum science topics and the setting of RSE within PSHE.

Head teacher

The Head teacher takes overall delegated responsibility for the implementation of this policy and for liaison with the Governing Body, parents, the Diocesan Schools' Service and the Local Education Authority, also appropriate agencies.

PSHE/RSE Co-ordinator

The co-ordinator with the head teacher has a general responsibility for supporting other members of staff in the implementation of this policy and will provide a lead in the dissemination of the information relating to RSE and the provision of in-service training.

All Staff

RSE is a whole school issue. All teachers have a responsibility of care; as well as fostering academic progress they should actively contribute to the guardianship and guidance of the physical, moral and spiritual well-being of their pupils. Teachers will be expected to teach RSE in accordance with the Catholic Ethos of the school. Appropriate training will be made available for all staff teaching RSE. All staff have been included in the development of this policy and all staff should be aware of the policy and how it relates to them.

RELATIONSHIP TO OTHER POLICIES AND CURRICULUM SUBJECTS

This RSE policy is to be delivered as part of the PSHE framework. It includes guidelines about pupil safety and is compatible with the school's other policy documents (for example, Bullying policy, Safeguarding Policy etc)

Pupils with particular difficulties whether of a physical or intellectual nature will receive appropriately differentiated support in order to enable them to achieve mature knowledge, understanding and skills. Teaching methods will be adapted to meet the varying needs of this group of pupils.

Learning about RSE in PSHE classes will link to/complement learning in those areas identified in the RSE audit.

CHILDREN'S QUESTIONS

The governors want to promote a healthy, positive atmosphere in which RSE can take place. They want to ensure that pupils can ask questions freely, be confident that their questions will be answered, and be sure that they will be free from bullying or harassment from other children and young people.

Controversial or Sensitive issues

There will always be sensitive or controversial issues in the field of RSE. These may be matter of maturity, of personal involvement or experience of children, of disagreement with the official teaching of the Church, of illegal activity or other doubtful, dubious or harmful activity. The governors believe that children are best educated, protected from harm and exploitation by discussing such issues openly within the context of the RSE programme. The use of ground rules, negotiated between teachers and pupils, will help to create a supportive climate for discussion. (See also Sex and Relationship Guidance, 4.5 'Dealing with questions' 0116/2000, Department for Education and Employment, July 2000 for more detail)

Some questions may raise issues which it would not be appropriate for teachers to answer during ordinary class time, e.g., where a child or young person's questions hints at abuse, is deliberately tendentious or is of a personal nature.

SUPPORTING CHILDREN AND YOUNG PEOPLE WHO ARE AT RISK

Children will also need to feel safe and secure in the environment in which RSE takes place. Effective RSE will provide opportunities for discussion of what is and is not appropriate in relationships. Such discussion may well lead to disclosure of a safeguarding issue. Teachers will need to be aware of the needs of their pupils and not let any fears and worries go unnoticed. Where a teacher suspects that a child or young person is a victim of or is at risk of abuse they are required to follow the school's safeguarding policy and immediately inform the designated senior member of staff responsible.

CONFIDENTIALITY AND ADVICE

All governors, all teachers, all support staff, all parents and all pupils must be made aware of this policy, particularly as it relates to issues of advice and confidentiality.

All lessons, especially those in the RSE programme, will have the best interests of pupils at heart, enabling them to grow in knowledge and understanding of relationships and sex, developing appropriate personal and social skills and becoming appreciative of the values and attitudes which underpin the Christian understanding of what it means to be fully human.

Pupils will be encouraged to talk to their parents/carers about the issues which are discussed in the programme. Teachers will always help pupils facing personal difficulties, in line with the school's pastoral care policy. Teachers should explain to pupils that they cannot offer unconditional confidentiality, in matters which are illegal or abusive for instance. Teachers will explain that in such circumstance they would have to inform others, e.g., parents, head teacher, but that the pupils would always be informed first that such action was going to be taken

MONITORING AND EVALUATION

The RSE Co-ordinator will monitor the provision of the various dimensions of the programme by examining plans, schemes of work and samples of pupils work at regular intervals. The programme will be evaluated biannually by means of questionnaires / response sheets/needs assessment given to pupils, and / or by discussion with pupils, staff and parents. The results of the evaluation should be reported to these groups of interested parties and their suggestions

sought for improvements. Governors will consider all such evaluations and suggestions before amending the policy. Governors remain ultimately responsible for the policy.

Appendix One- Sample Letter



**Newman
Catholic College**

Everyone Counts
Everyone Contributes
Everyone Succeeds

Newman Catholic College

Harlesden Road, Willesden
London NW10 3RN
Tel: 0208 985 3947/8497

E-mail: office@ncc.brent.sch.uk
Website: www.ncc.brent.sch.uk

Headteacher: Mr D P Coyle
Chair of Governors: Mr P O'Shea

1st February 2022

Parents and Carers,

As a part of your child's education at Newman Catholic College, we promote personal wellbeing and development through a comprehensive Personal, Social, Health and Economic (PSHE) education programme. PSHE education is the curriculum subject that gives young people the knowledge, understanding, attitudes and practical skills to live safe, healthy, productive lives and meet their full potential. There are three strands Health and Well Being (Term One), Careers and Living in the Wider World (Term Two) Relationships and Sex Education (Term Three).

PSHE education is taught throughout the school in every year group by your child's form tutor and is monitored and reviewed regularly by the staff and governing body. All PSHE teaching takes place in a safe learning environment and is underpinned by our school ethos and values. Parents may request that their child is withdrawn from the sex education parts of Relationships and Sex Education classes in secondary school (but not from the Relationship parts). Parents should note that the Science curriculum in all maintained schools also includes content on human development, including reproduction. There is no right to withdraw children from classes covering the Science curriculum. New legislation introduces the concept that, once a child is three terms away from turning 16, they may overrule their parents' wishes and attend RSE classes if they choose to. If you wish to withdraw your child from the Relationships and Sex Education sessions on the curriculum please put this in writing, addressed to Mr Coyle, Headteacher.

If you have any further questions, please do not hesitate to contact me.

Yours sincerely,

Miss S Grace

sgrace@ncc.brent.sch.uk

Personal Development-SMSC, Marketing & Community Link

<http://www.ncc.brent.sch.uk/> Twitter, Facebook & Instagram [@nccbrent](https://www.instagram.com/nccbrent)



Diocese of Westminster
An Outstanding Catholic School



In compliance with the Data Protection Act 2018, the school has a statutory requirement to process this data. The school has a duty to protect this information and keep it up to date. The school is required to share some of the data with the Local Authority and with the DfE. For more information on how your data is processed, please see our privacy notice: www.ncc.brent.sch.uk

Relationships and Sex Education Content

Year 7 and EAL Projects

You and your knowledge about sex

- *Sex: facts and myths*
- *Sex and the law*
- *Safer sex: contraception*

You and your relationships

- *Exploring your sexuality*
- *Sex: your rights and responsibilities*
- *Attitudes to sex*

Year 9

You and your sexuality and gender

- *Your developing sexuality*
- *What influences your attitudes to sexuality and gender?*
- *Understanding gender identity*

Year 11

Sexuality and Gender Identity

- *Gender*
- *Sexuality*

Year 12

Sex Relationships and Society

- *Date Rape*
- *Miscarriage and unplanned pregnancy*

Year 8

Sexual relationships – your responsibilities

- *Giving your consent*
- *Am I ready to have sex?*
- *Having sex – teenagers' experiences*

You and safer sex

- *STIs*
- *Symptoms of STIs*
- *Sexual health clinics*

Year 10

Sexual Relationships

- *Sex and Relationship Responsibilities*
- *Keeping Sexually Healthy*
- *Understanding fertility, infertility and different routes to parenthood*

Sexually Explicit Content Online

- *Sexual Content Online*
- *Pornography*

Year 13

Sex Relationships and Society

- *Controlling relationships*
- *Sex and Media*
- *Sex readiness and encounters*

Appendix Two- Parent Questionnaire

Relationships & Sex Education Parental Consultation

Is the RSE Policy clearly written and easy to understand?

- ☐ Yes
- ☐ No

I am happy with how the school plans to deliver relationships, health and sex education.

- ☐ Yes
- ☐ No

I feel that the planned RSE covers all of the DfE curriculum aims

- ☐ Strongly disagree
- ☐ Disagree
- ☐ Neutral
- ☐ Agree
- ☐ Strongly agree

Is there anything you think has not been covered that should be covered in the RSE curriculum and policy?

Your answer

Our school have chosen to teach sex education. Do you understand that you have the right to withdraw your child from these sessions?

☐ Yes

☐ No

Relationship Education is now compulsory for all Secondary children. Do you understand that you cannot withdraw your child from these sessions?

☐ Yes

☐ No

Do you feel confident that your child will be taught RSE in line with DfE guidance which is sensitive to their religious and cultural background in a way that respects dignity and equality of all students?

☐ Yes

☐ No

Please indicate any other feedback relating to the RSE Curriculum and Policy

Your answer
