

Newman Catholic College

Introduction to Sparx Maths

Agenda:

- Why Sparx Maths
- How Sparx Maths Works
- Supporting Your Child

Why Sparx Maths

“Time spent using Sparx Maths is positively and significantly associated with higher outcomes in maths”



EUROPE



UNIVERSITY OF
CAMBRIDGE

[Microsoft Word - Independent Analysis of the Relationship Between Sparx Maths and Maths Outcomes key findings_FINAL.docx \(cam.ac.uk\)](#)



Newman
Catholic College
Excellence Through Faith

Why Sparx Maths

Sparx Maths creates an hour's worth of **perfectly tailored practice homework** for each student each week.

The practice is both **challenging** (to ensure students need to think) and **achievable** (so that students can be successful).

The practice uses **spaced repetition and interleaving** to support a change in students' long term memories.

Sparx is **inclusive** and can adapt to all students' current level of expertise. This promotes **engagement, confidence** and ultimately **learning**.

Why Sparx Maths

The Sparx Content Design Team is made up of teachers, mathematicians, data scientists, graphic designers and grammar experts. The team has spent 10 years working with schools and using qualitative and quantitative data to carefully design a library of over 45,000 mathematical questions and 10,000 videos to ensure that:

- genuine learning is promoted for all students;
- misconceptions are addressed;
- learners are carefully led step-by-step through every topic;
- links are built between topics where possible;
- and learners are prepared for their future.

Why Sparx Maths

Bookwork codes - A unique and clever bookwork check technology to ensure that students habitually write workings down to foster good practice and aid memory.

10,000 videos - Every question is accompanied with a short nudge video to unstick students so they are supported and don't lose motivation.

100% completion target for all students - Empowered by our content and personalisation, which pitches homework appropriately for all students, we can set a fair expectation that all students complete 100% of their hour long compulsory homework every week. This clarity of mission empowers students, parents, teachers and schools to have the highest of expectations around home practice and promotes consistency across our schools.

In-built retrieval practice - Our systems create interleaved homework made up of topics from recent lessons and topics from further back to promote longer-term retrieval practice.

How Sparx Maths Works

Sparx Maths

Home

Teachers & Leaders ▾

Sparx Curriculum **New!**

News & Updates ▾

Register interest

Log in ▾

Now Live!

FREE - Sparx Maths Curriculum

An intelligently sequenced 5-year curriculum for Y7 to Y11

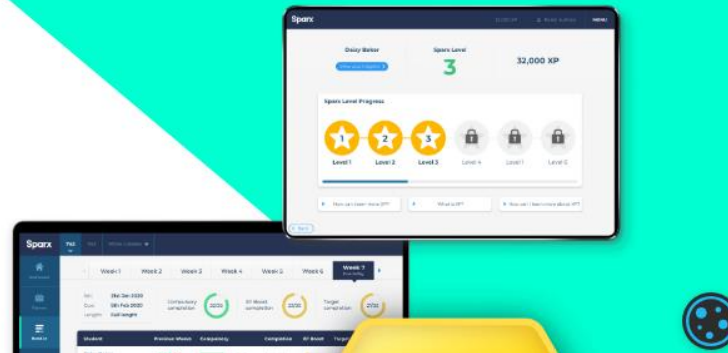
Find out more

Teacher login

Student login

Personalised maths homework, proven to boost student grades

1 hour of Sparx Maths a week significantly improves student

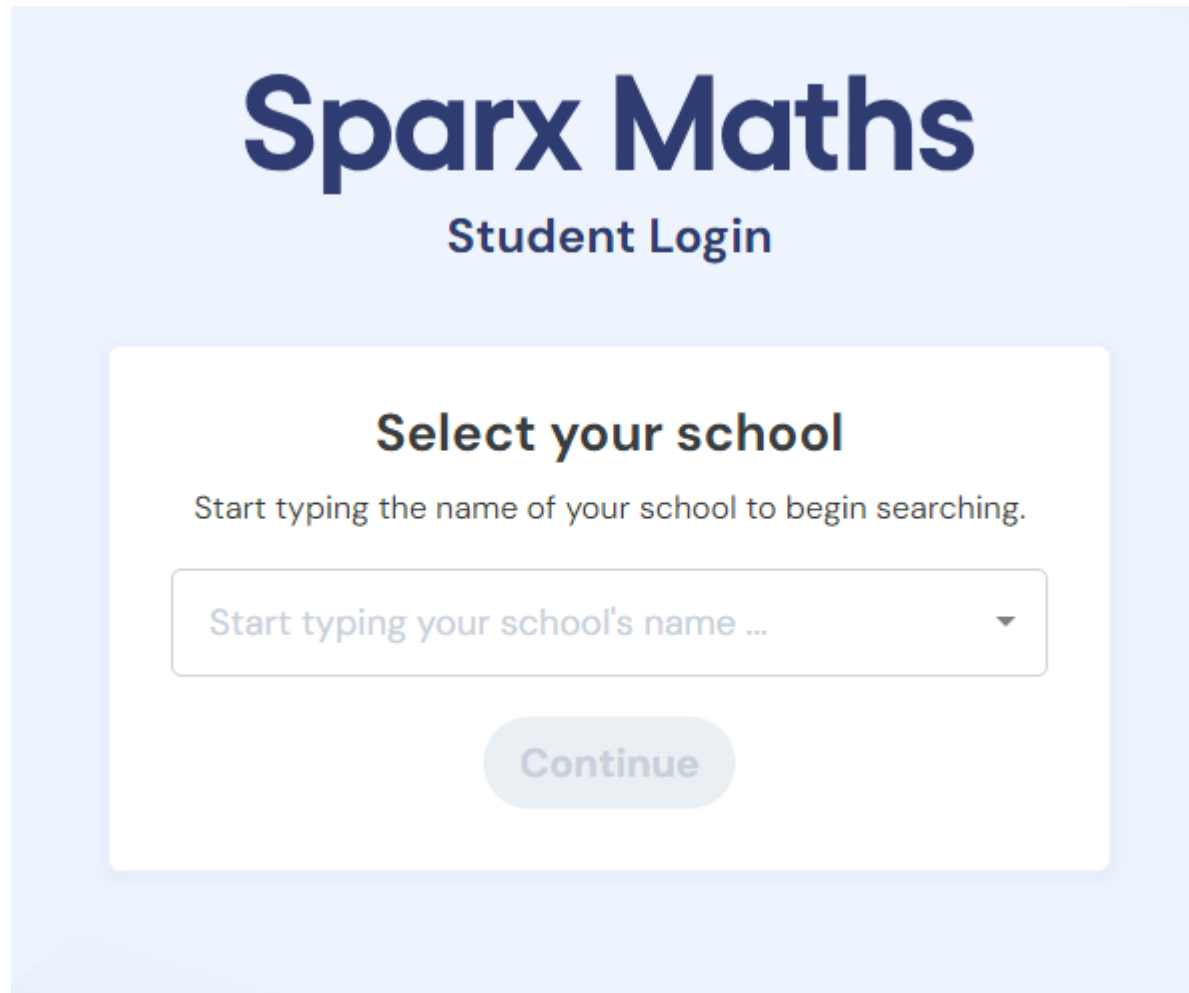


Go to www.sparx.co.uk

Click 'Log in'

Select 'Student login'

How Sparx Maths Works



Sparx Maths
Student Login

Select your school
Start typing the name of your school to begin searching.

Start typing your school's name ... ▼

Continue

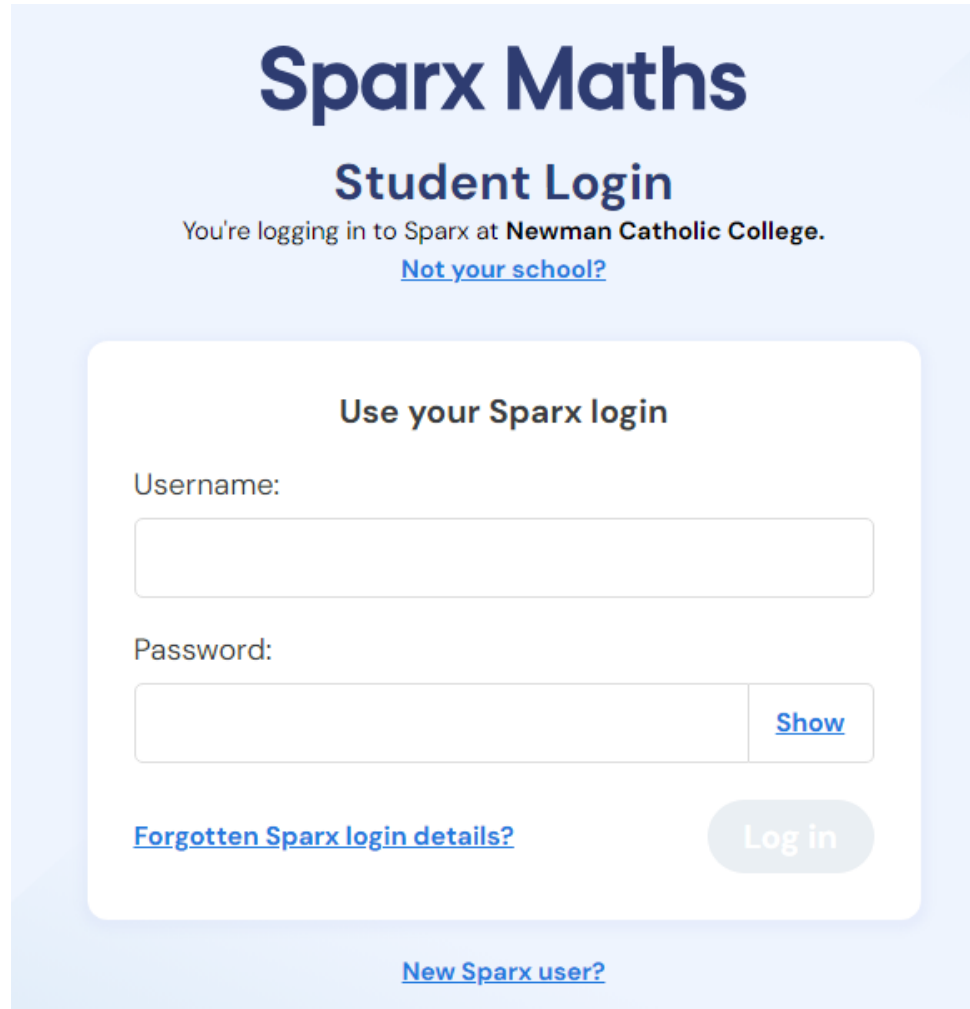
Search for

Newman Catholic College
London

Or

NW10 3RN

How Sparx Maths Works



Sparx Maths
Student Login
You're logging in to Sparx at **Newman Catholic College**.
[Not your school?](#)

Use your Sparx login

Username:

Password:
 [Show](#)

[Forgotten Sparx login details?](#)

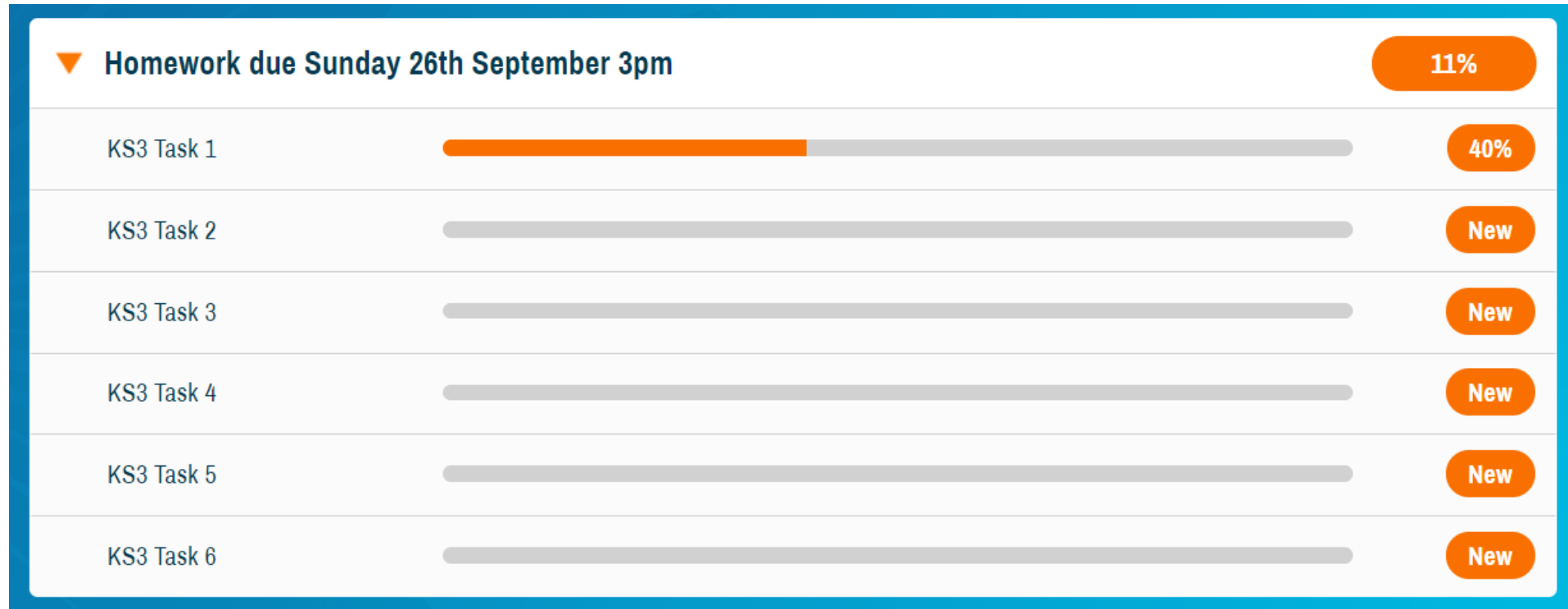
[New Sparx user?](#)

Enter Username and Password

Or

Select 'forgot login details' to reset the password

How Sparx Maths Works



How Sparx Maths Works

Compulsory

- The questions in this sections must all be completed correctly

XP Boost

- The questions in this section are optional
- The level of challenge is similar to the compulsory section
- These questions will give students additional XP points (effort points)

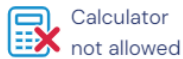
Target

- The questions in this section are optional
- The level of challenge is higher than the compulsory section
- These questions will give students additional XP points (effort points)

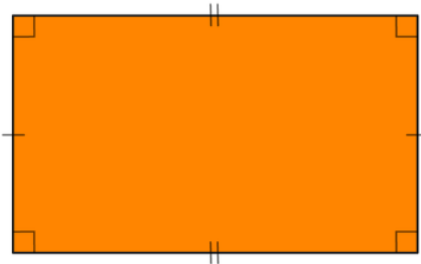
How Sparx Maths Works

Bookwork codes, working out and answers must be written down.

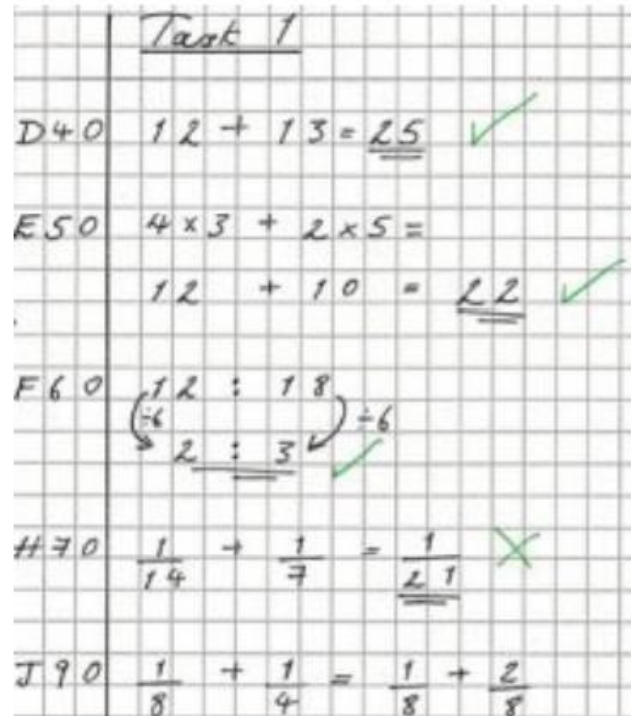
Bookwork code: 2D



What is the mathematical name for this shape?



[Zoom](#)



Bookwork check

What is the correct answer for this question?

Bookwork 2B

686 litres

[Zoom](#)

B

[Zoom](#)

9 litres

[Zoom](#)

13 litres

[Zoom](#)

D

[Zoom](#)

E

[Zoom](#)

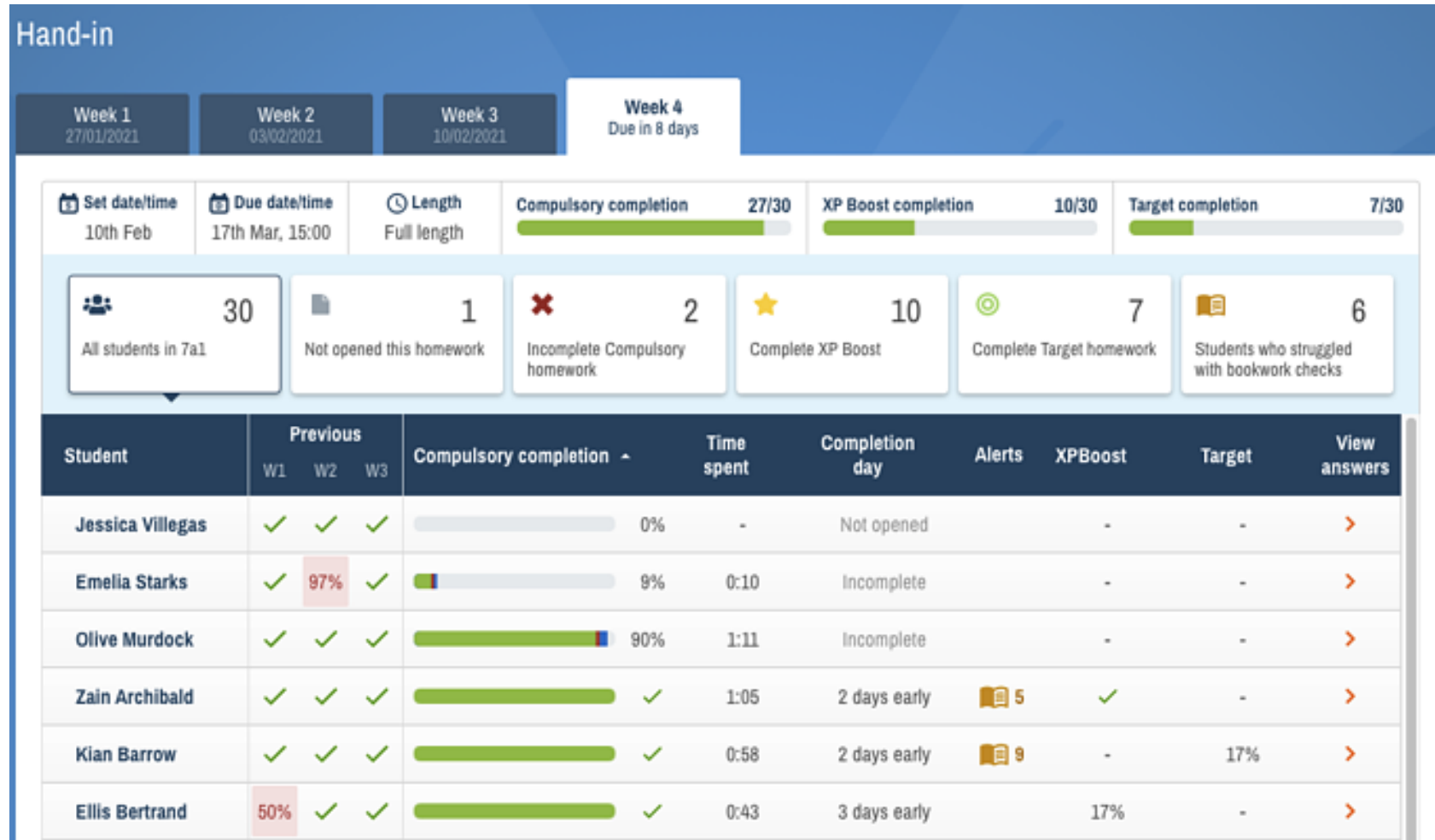
[I didn't write this down](#)

[Submit >](#)



Newman
Catholic College
Excellence Through Faith

How Sparx Maths Works



Supporting Your Child

Organisation:

- Homework is set weekly
- Encourage your child to start as soon as possible
- Homework takes at least 30 minutes
- Parent email updates are sent 3 days before homework is due

Supporting Your Child

How your son should approach questions:

- Try each question independently first
- If they get the question wrong they can:
 - Watch the support video on Sparx Maths
 - Review the relevant lesson on google classroom
 - Look back in their maths class book
 - Attend homework club
 - See their class teacher for help

Supporting Your Child

Sparx Maths use a sophisticated algorithm to select questions that are the appropriate level of challenge for each student. Therefore, it is very important that **you do not help them to answer questions**. If you do, the homework questions may become too challenging for them.

Contact:

Call 0208 965 3947

Email epalmer@ncc.brent.sch.uk