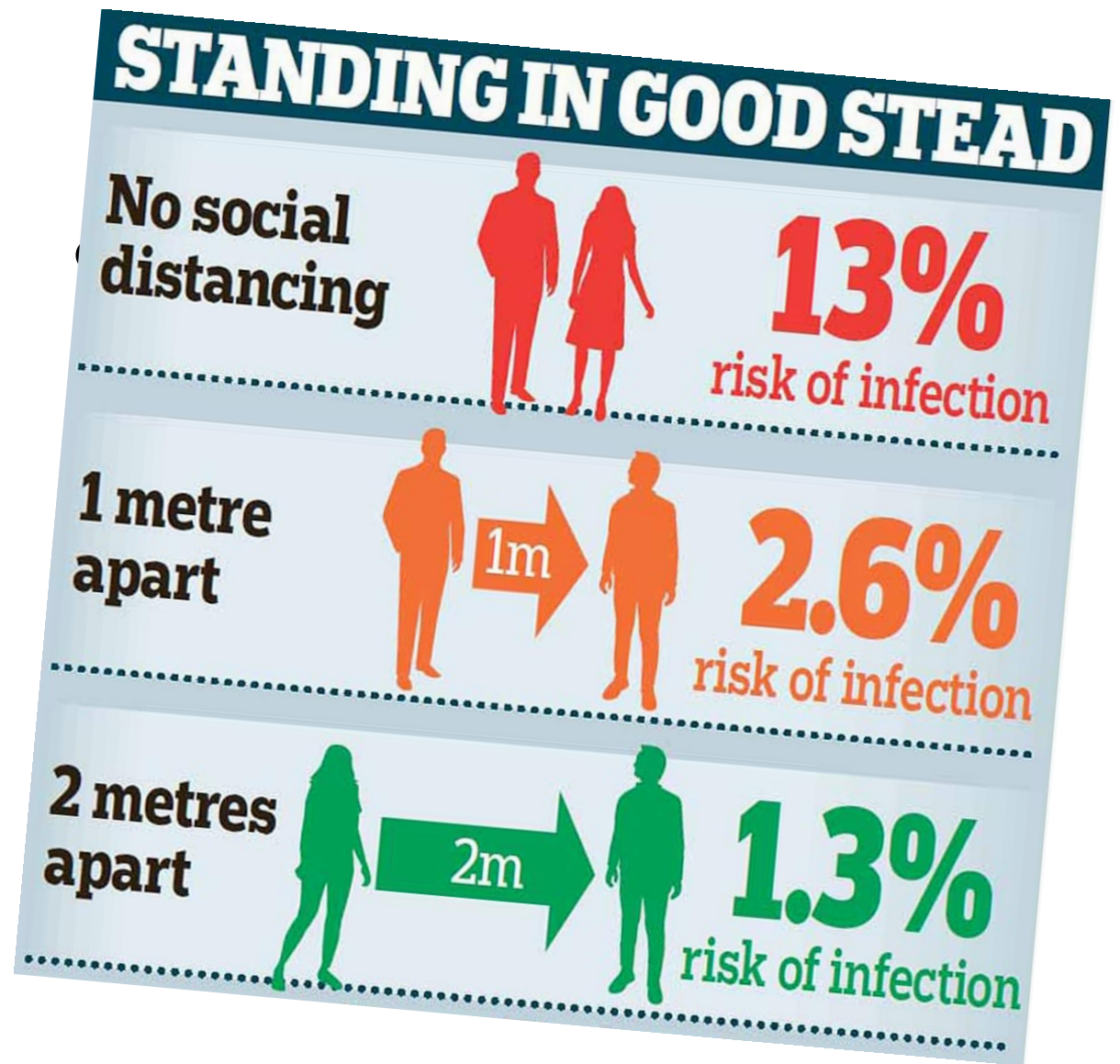


Welcome back to
Newman Catholic College!

Keeping everyone safe at Newman Catholic College



Keep
Your
Distance!



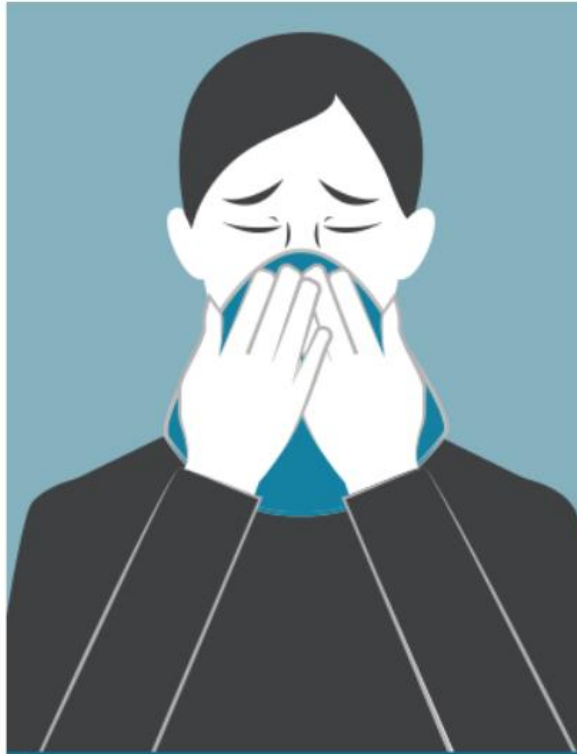


**Follow Hygiene
guidance**





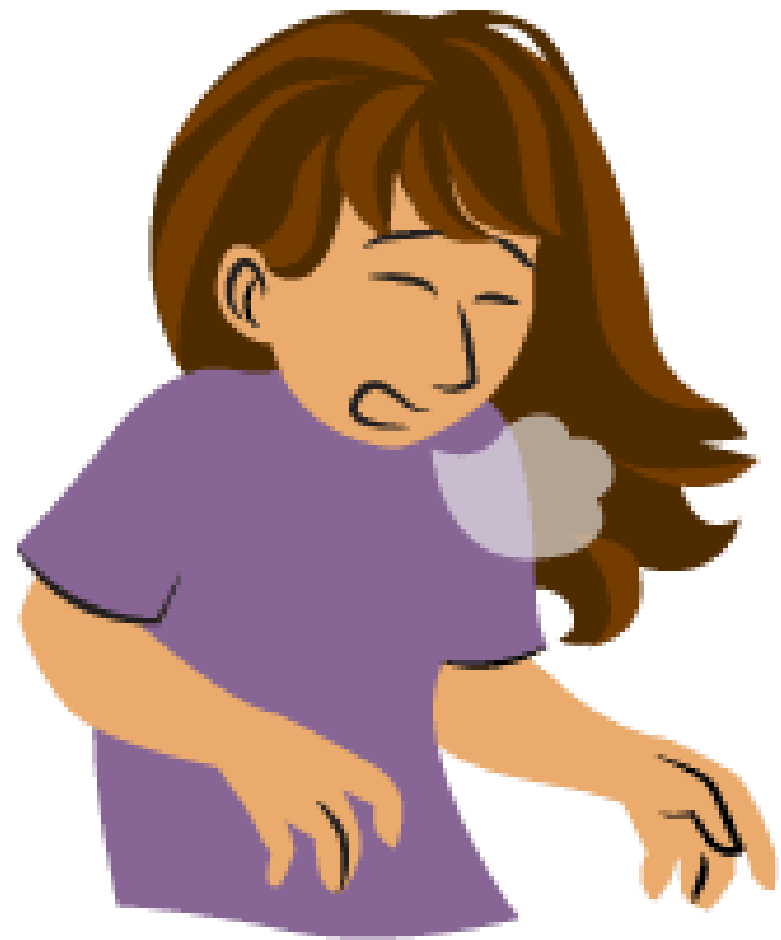
**Wash your
hands**



**Use a tissue
for coughs**



**Avoid touching
your face**



✗ Wrong



✗ Wrong



✓ Right

8

Steps Of Hand Washing



1



Wash your palms.

2



Scrub each finger and between fingers.

3



Rub back of hands and between fingers.

4



Rub the base of the thumbs.

5



Back of Fingers

6



Scrub your nails on palms.

7



Wash your wrist

8



Dry hands with clean towel or tissue.

Keeping Safe at NCC

Personal Protection Equipment (PPE)

- Face masks must be worn on journey to and from school if using public transport
- Gloves and face masks are not required in school
- Hand hygiene
- Respiratory hygiene
- Keep your distance



**Day 1
Bubble 1
Group 1**

**Day 1
Bubble 1
Group 2**

**Day 2
Bubble 2
Group 1**

**Day 2
Bubble 2
Group 2**

**Day 3
Bubble 3
Group 1**

**Day 3
Bubble 3
Group 2**



NCC Student Entrance Protocol

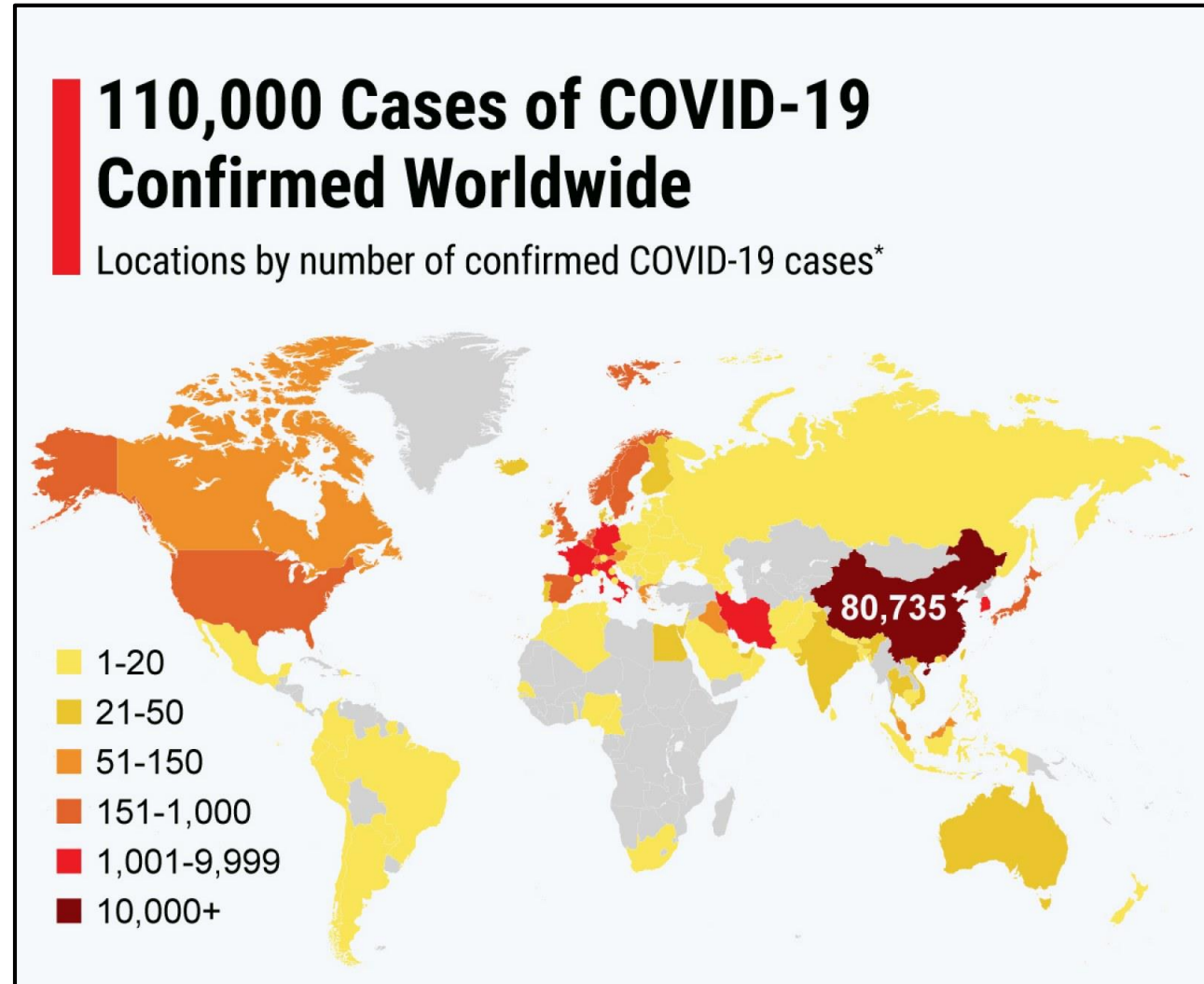
When you enter the building:

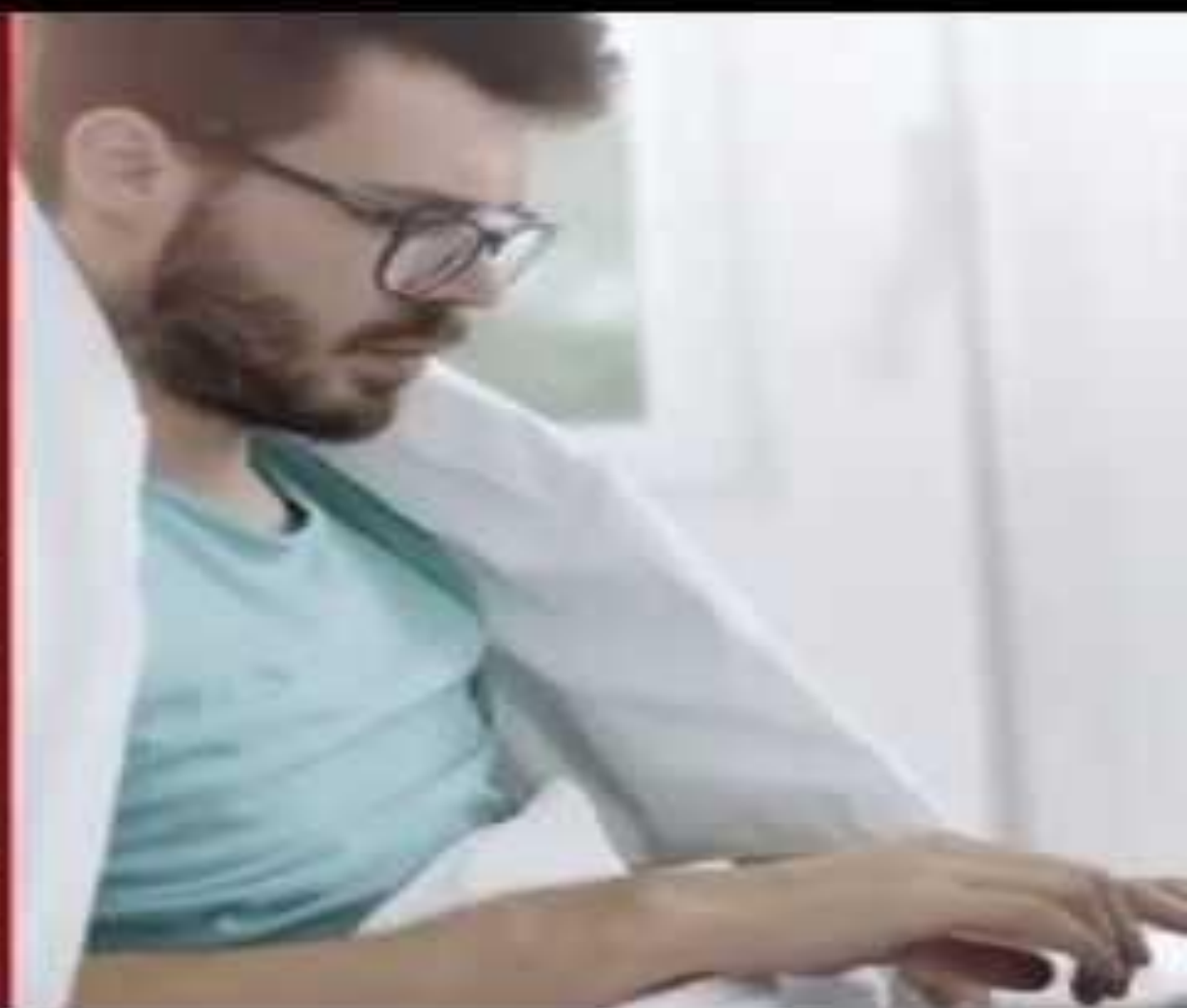
- Maintain social distance at all times - 1m+ minimum, 2m where possible
- Have temperature taken on entrance to reception
- Staff will ask if you or a household member are experiencing any COVID-19 symptoms
- Wash hands in one of 3 reception area basins
- Parents & guardians to use reception toilet; students should use regular student toilets
- Face masks must be worn on journey to and from school if using public transport



What is Coronavirus?

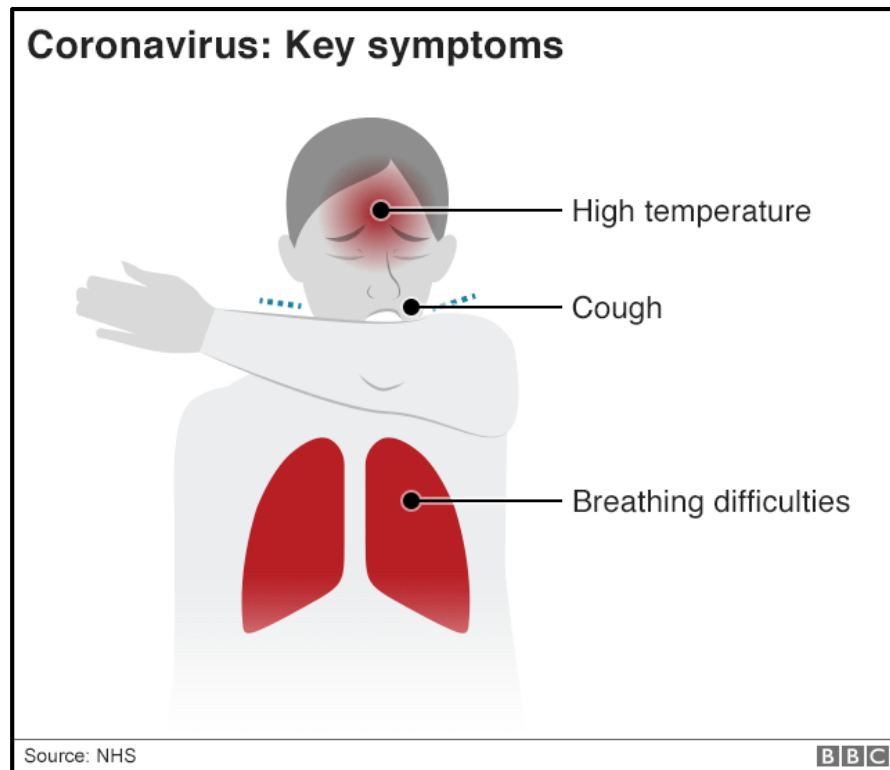
- COVID-19 is the official name for coronavirus
- Coronavirus is a virus that affects the lungs
- It is a virus that transferred from animals to humans
- It has now been declared a pandemic (a virus covering the whole world).





What are Coronavirus symptoms?

- 81% develop mild symptoms
- 14% develop severe symptoms
- 5% become critically ill



SYMPTOMS:

- Fever
- Fatigue
- Dry Cough

Other symptoms were

- 31% had shortness of breath
- 11% had muscle ache
- 9% had confusion
- 8% had a headache
- 5% had a sore throat
- Loss of smell or taste for prolonged period

Planning ahead: July, August, Autumn Term

July –

- Small group sessions in bubbles on assigned days (Year 10/12 only)
- Google Classroom and Live lessons continue

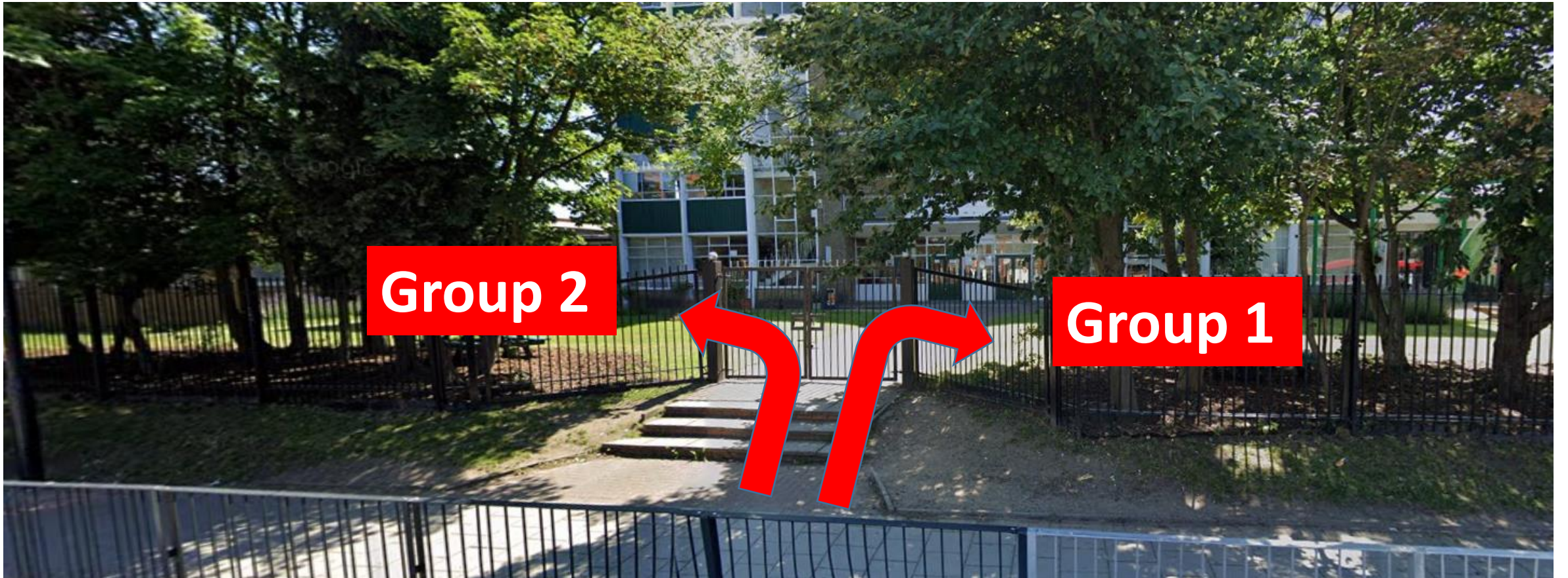
August –

- Continue revision and work packs

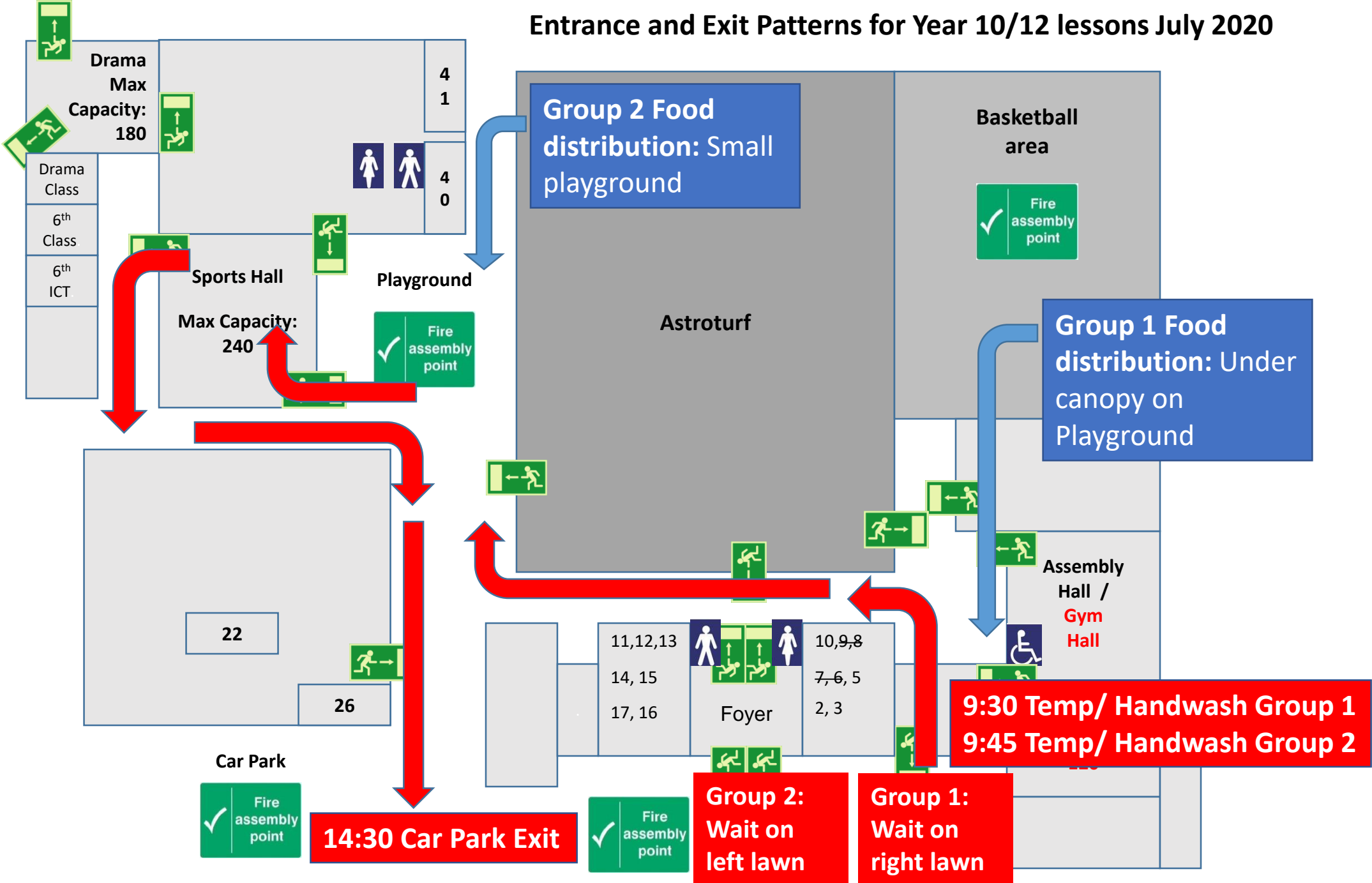
September –

- Schools plan wider opening – details TBC

On arrival: wait on the lawn at a distance:
Group 1, turn right - **Group 2** turn left



Entrance and Exit Patterns for Year 10/12 lessons July 2020



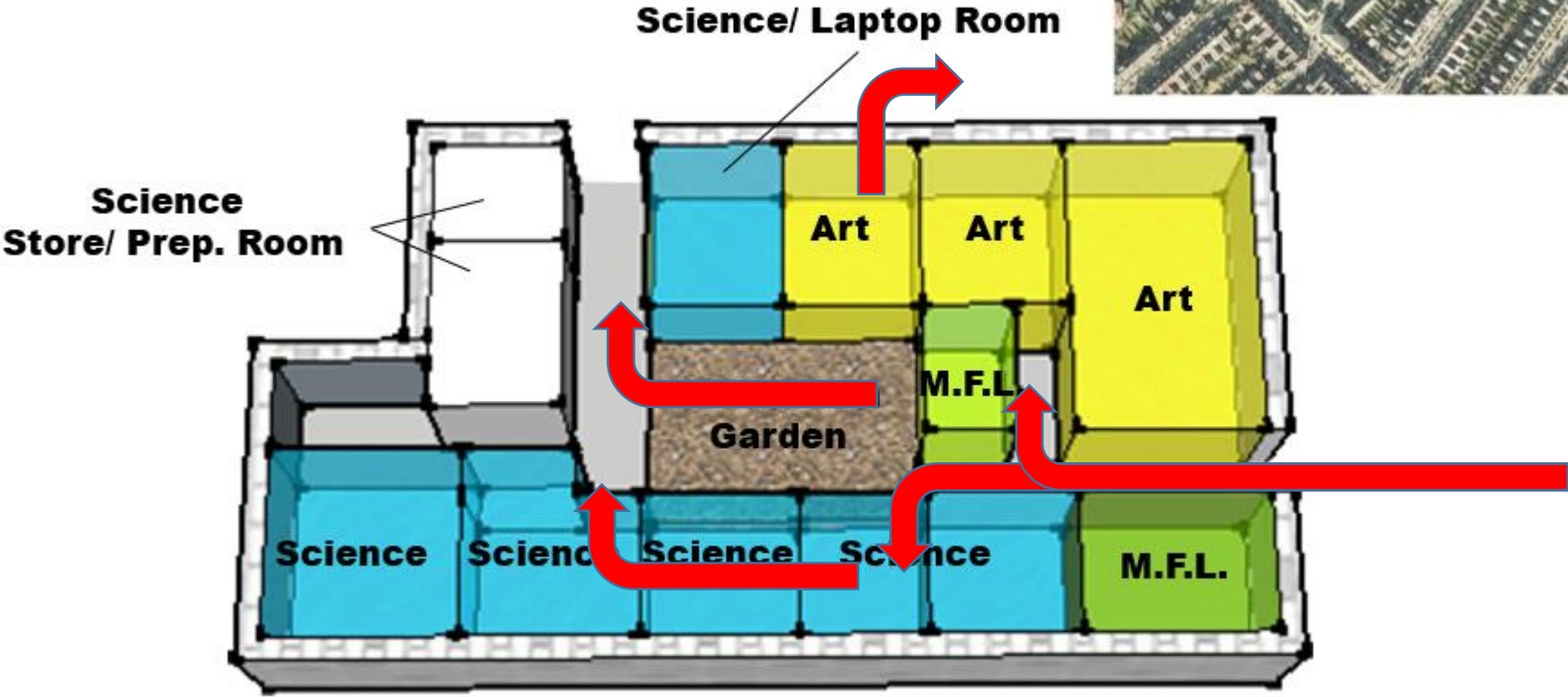
One way
system:
More
Block



MORE
BLOCK



One way system: Fisher Block

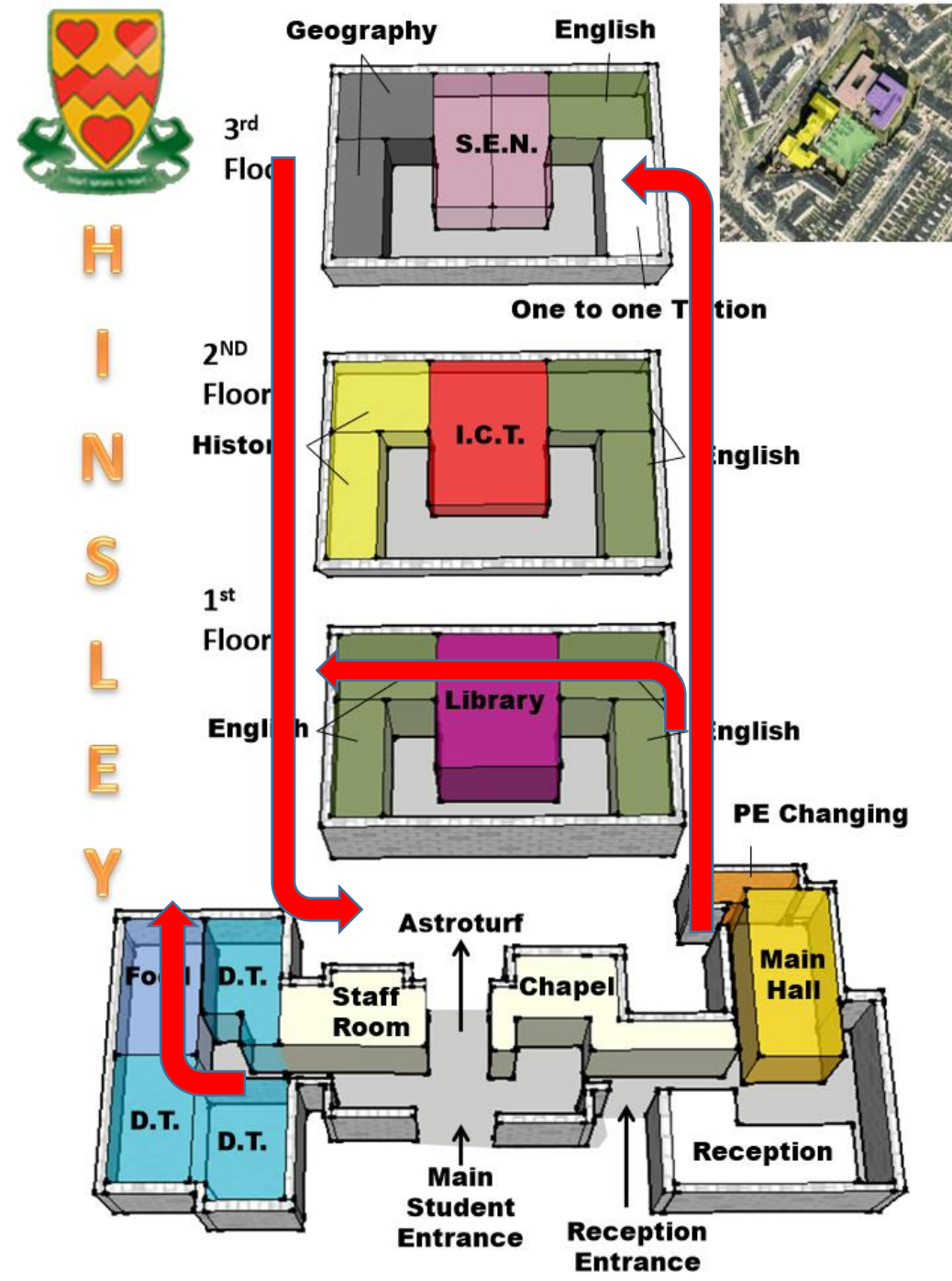


FISHER BLOCK



One way system: Hinsley Block

- UP: From the Chapel
- ACROSS: Top Floor (H10>H11)
- DOWN: Exit at Staff room
- EXIT: Playground
- DT Exit: Through Food Tech



Keeping everyone safe at Newman Catholic College

